

# MediaReactor Proxy

## Introduction

### MediaReactor Proxy User Guide

MediaReactor Proxy software was created in conjunction with Drastic Technologies' MediaReactor digital media file conversion software to allow the user to automatically convert incoming files into user-defined file types, using a "watch folder" to sense the arrival of incoming files, and scheduling conversion activity according to the user's preferences.

Please review the following sections to learn how to use all the features of MediaReactor Proxy software.

### How to Use MediaReactor Proxy

MediaReactor Proxy allows the user to set up a watched folder that senses incoming files and converts them to a file type of the user's choice. The user sets up what type of file will be created and how the file creation is handled. Multiple instances of MediaReactor Proxy may be run using different conversion and scheduling parameters to satisfy differing conversion and workflow requirements.

### Run MediaReactor Proxy

Run MediaReactor Proxy via the start menu; Start Menu/ Programs/ MediaReactor/ MediaReactor\_Proxy. The main interface will open.

### Set the Media File Type - Settings Dialog Box

Open the Settings dialog box. The Settings dialog box can be accessed via the main menus, under Options/ Settings. Alternately the user may open this dialog box via the toolbar - press **Config**. Confirm that the settings are correct for the file type you need to create. Detailed descriptions of the settings are provided in the reference section of this document.

Press the **OK** button

### Set the Media Creation Parameters - Folders Dialog Box

Open the Folders dialog box. The Folders dialog box may be accessed via the main menus, under Options/Folders. Alternately the user may open this dialog box via the toolbar - press **Folders**. Confirm that the settings are correct for the way you want the conversions handled. Detailed descriptions of the settings are provided in the reference section of this document.

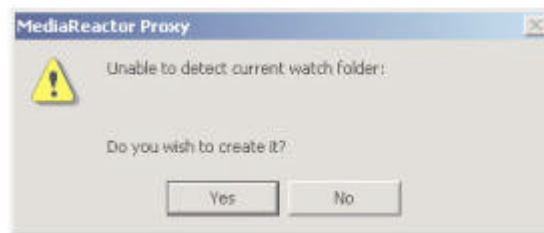
Select the **OK** button once all of the choices have been addressed.

If all the above parameters have been properly adjusted, MediaReactor Proxy (when running) will create the file types you have set up, in the folder of your choice, and with some flexibility as to when the files will be created.

### **MediaReactor Proxy QuickStart**

Here is how to get started quickly using MediaReactor Proxy. Run MediaReactor Proxy: go to the Start Menu, under Programs/Drastic Technologies/MediaReactor/MediaReactor\_Proxy.

If this is the first time you have run MediaReactor Proxy, or if you have not saved a watch folder location, you will be prompted as to whether you want to create a watch folder.



Select yes. The main MediaReactor Proxy interface will open.

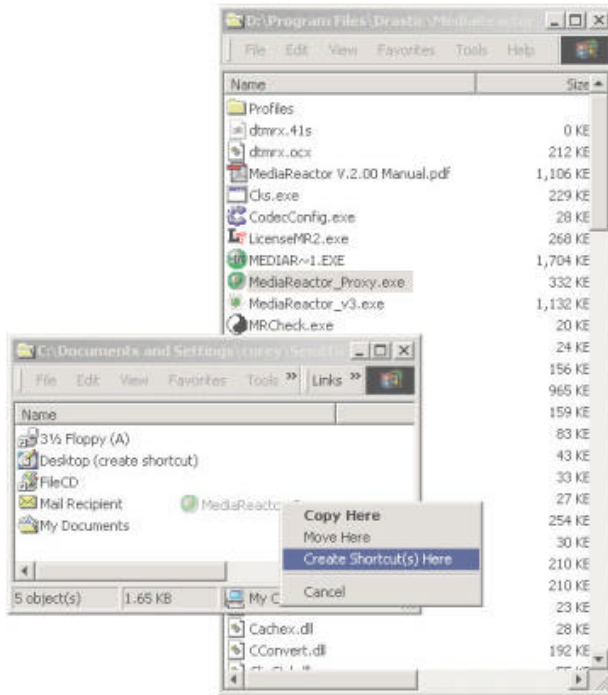
Open the Settings dialog box. This can be accessed through the Toolbar (select Config), or through the Main Menus (select Settings). For the purposes of this tutorial, set the following parameters:

- o Set the File Type to AVI.
- o Set the Codec ID to Cinepak.
- o Leave everything else in the default state. Close the Settings dialog box.

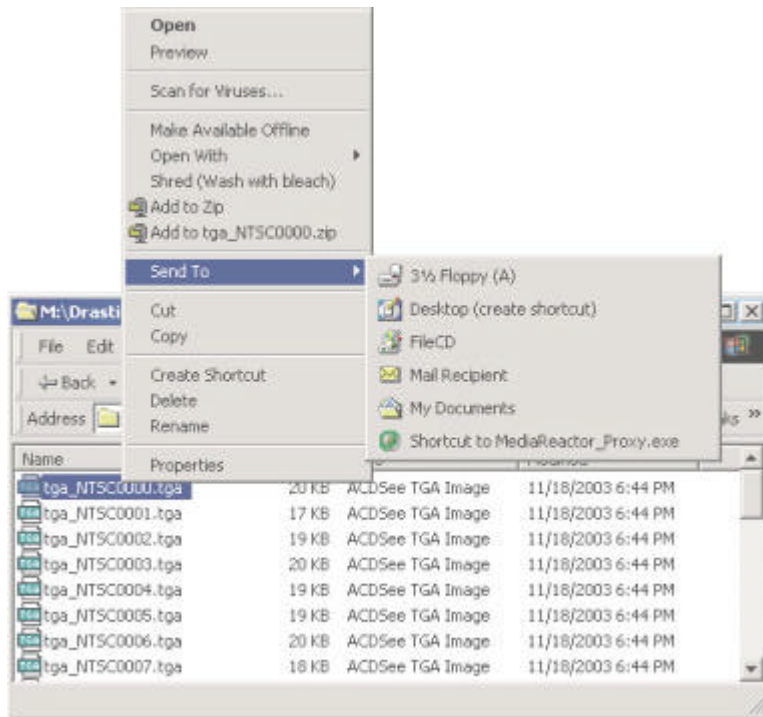
Open the Folders dialog box via the main menus, under Options/ Folders, or through the Toolbar - press Folders. Set the following parameters:

- o Set the location of the Watch Folder.
- o Set the location of the Target folder.
- o Select the following media types: Video, Audio, Images.
- o Set the naming convention to: None.
- o Deselect any time settings.
- o Click OK. The Folders dialog box will close.
- o Add (copy or move) source media into the Watch Folder.

**For advanced users:** create a shortcut to MediaReactor Proxy in your user's profile. Open your user's profile. Then find the MediaReactor program executable, right-click it and drag it onto your user's profile folder. Select the Create shortcut here option.



Now browse to the location of a source media file. Right-click on the file.

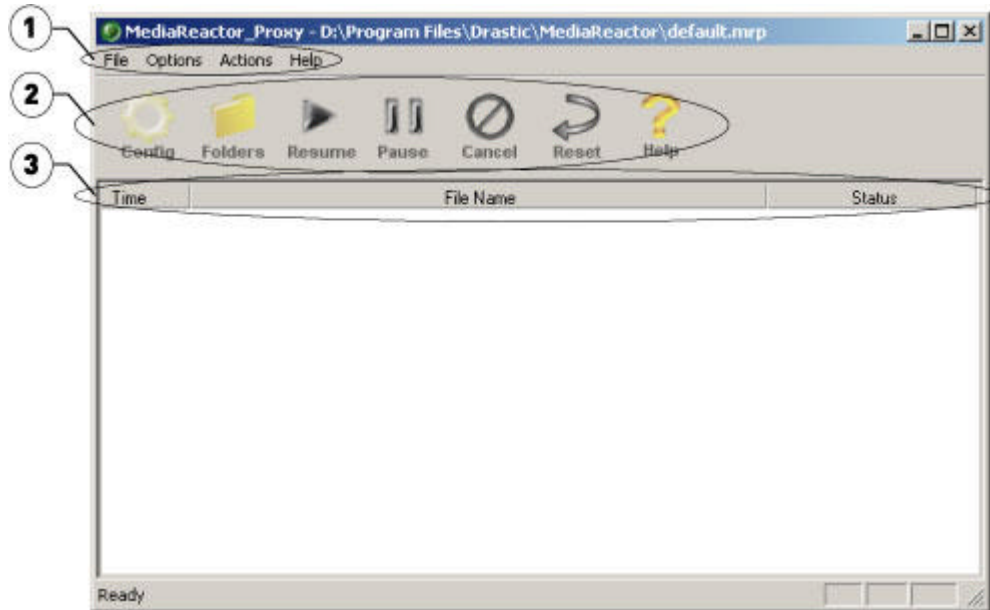


You will be able to select the option "Send to" the MediaReactor Proxy shortcut. Any suitable source media file may be converted using this method.

Once MediaReactor Proxy has been set up, the user may copy or add files to the Watch Folder, and they will be converted. Essentially it is a "set it and forget it" application, which operates in the background according to the set parameters.

## MediaReactor Proxy Reference

### The Main Interface



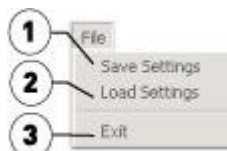
This reference work will look at each section in detail to provide information regarding the available controls and their functions. For the purposes of this reference work the interface has been divided into the following sections:

1.	<b>Main Menus</b> - access to all the controls of MediaReactor Proxy.
2.	<b>Toolbar</b> - quick push-button access to commonly used controls.
3.	<b>Job List</b> - displays the current conversion activity.

### The Main Menus

#### The File Menu

The File Menu allows the user to save and load configuration parameters, or to exit MediaReactor Proxy.



1.	<b>Save Settings</b> - opens a "Save As" dialog box, which allows the user to save the
----	--

	current conversion parameters. Multiple configuration files may be saved and run as separate instances of MediaReactor Proxy on the same system.
2.	<b>Load Settings</b> - opens a standard browser, which allows the user to search for a saved Settings file. Opening a saved settings file will load the parameters of this file into this instance of MediaReactor Proxy.
3.	<b>Exit</b> - stop any conversion activity in progress and close MediaReactor Proxy.

### Options Menu

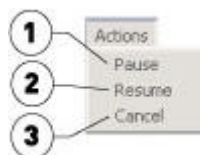
The Options Menu allows the user to view and adjust the parameters for conversion file types/ scheduling, and product licensing.



1.	<b>Settings</b> - opens the Settings dialog box, which allows the user to adjust the parameters for the type of file MediaReactor Proxy will create.
2.	<b>Folders</b> - opens the Folders dialog box, which allows the user to set up the manner in which the new files will be created.
3.	<b>Authorization</b> - opens the MediaReactor Proxy licensing dialog box, which allows the user to view and update the status of their license.
4.	<b>License Information</b> - displays the current license status

### Actions Menu

The Actions Menu allows the user to affect the status of any conversions in progress.



1.	<b>Pause</b> - stop any conversions in progress, and prevent any new conversions from beginning.
2.	<b>Resume</b> - resume conversion activity - allow MediaReactor Proxy to check watched folders and create files according to the setup.
3.	<b>Cancel</b> - cancel the selected conversion.

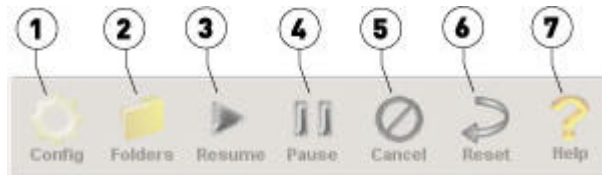
## Help Menu

The Help Menu offers any online Help Files including the About screen, which displays version information for MediaReactor Proxy.



## The Toolbar

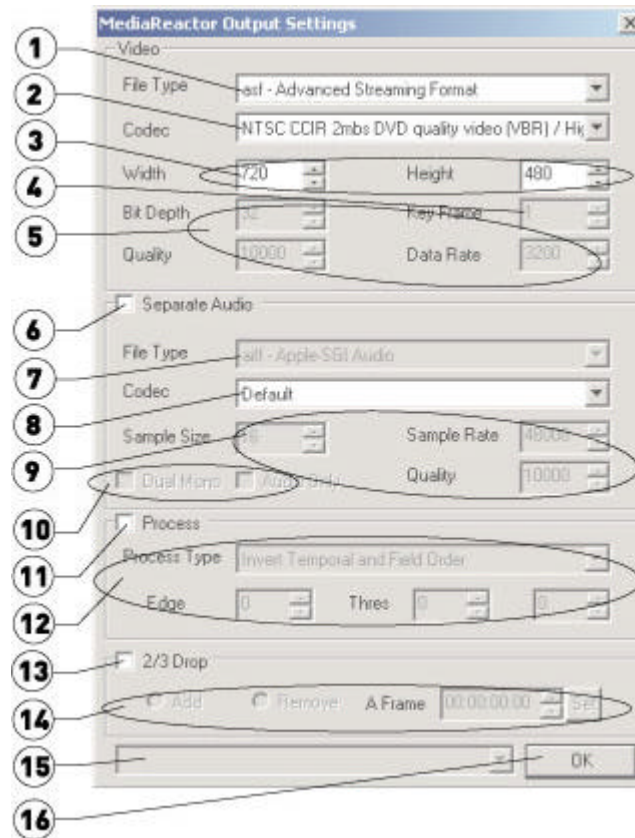
The Toolbar offers quick one-button access to some of the more commonly used commands within MediaReactor Proxy.



1.	<b>Config</b> - open the Setting dialog box, which allows the user to set up what type of files will be created.
2.	<b>Folders</b> - open the Folders dialog box, which allows the user to set up how the file conversions will be handled.
3.	<b>Resume</b> - resume conversion activity - allow MediaReactor Proxy to check watched folders and create files according to the setup.
4.	<b>Pause</b> - stop any conversions in progress, and prevent any new conversions from beginning.
5.	<b>Cancel</b> - cancel the selected conversion.
6.	<b>Reset</b> - reset the selected conversion.
7.	<b>Help</b> - the Help Menu offers any online help including the About screen, which displays version information for MediaReactor Proxy.

## The Settings Configuration Dialog Box

Open the Settings Configuration dialog box via the main menus, under Options/ Settings, or via the toolbar - press **Config**. The following dialog box will open:

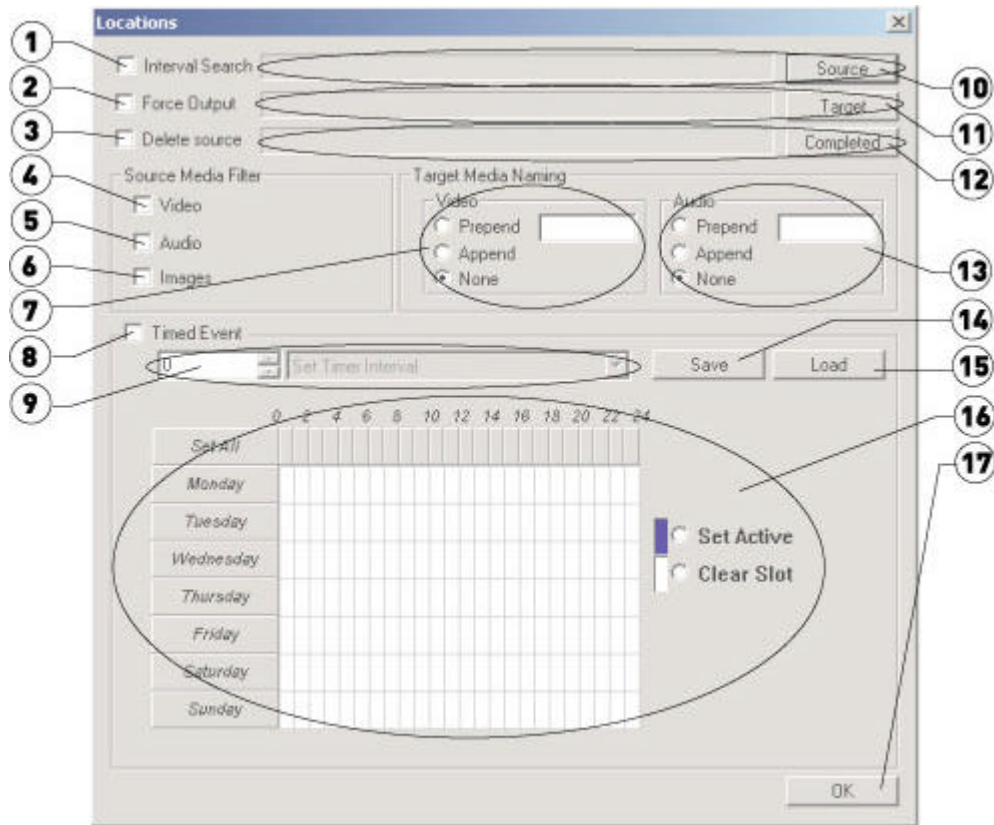


1.	<b>(Video) File Type</b> - select the Target video file type from the pulldown menu
2.	<b>(Video) codec</b> - select the codec for the Target video file type using the pulldown menu.
3.	<b>Width/ Height Ratio</b> - if supported, press the up or down buttons to increment the height and/or width of the Target video file.
4.	<b>Key Frame</b> - select between available Key Frame settings using the up or down arrows.
5.	<b>(Video) Bit Depth, Quality, Data Rate</b> - displays the settings for and offers controls to adjust the settings for these parameters, which affect image resolution and visual quality.
6.	<b>Separate Audio</b> - create an audio file separate from the video file - extract if necessary
7.	<b>(Audio) File Type</b> - select the Target audio file type from the pulldown menu.
8.	<b>(Audio) Codec</b> - select between available audio codecs for the Target file.
9.	<b>(Audio) Sample Size, Sample Rate, Quality</b> - displays the settings for and

	offers controls to adjust the settings for these parameters, which affect audio resolution, hence audio output quality.
10.	<b>Dual Mono, Audio Only</b> - select Dual Mono to create two matched mono audio files during the conversion. Select Audio Only to only create only audio files from the source file and not use the video portion of the file.
11.	<b>Process</b> - select the Process checkbox to enable processing to be applied during the conversion.
12.	<b>Process Type, Edge, Thres</b> - press the Process Type pulldown menu to select between available processes. The Type and Thres boxes allow the user to adjust the parameters of specific processes in legal increments.
13.	<b>2/3 Drop</b> - select to apply 2/3 drop processing to incoming files.
14.	<b>Add, Remove, A-Frame, Set</b> - Add or remove Telecine-generated frames from an incoming file, or set the "A" Frame by time code.
15.	<b>Pulldown Menu</b> - adjust specific parameters of processing, if applicable.
16.	<b>OK</b> - accept current settings including any changes made, and close the Settings dialog box.

## The Folders Configuration Dialog Box

Open the Folders Configuration dialog box via the main menus, under Options/ Folders, or through the Toolbar - press **Folders**. The following dialog box will open:



1.	<b>Interval Search</b> - search for files in the watched folder at the default interval
2.	<b>Force Output</b> - convert a file even though the new file has the same name as and overwrites an existing file in the target directory.
3.	<b>Delete Source</b> - delete the incoming (source) file upon completion of the Target file creation.
4.	<b>(Source Media Filter) Video</b> - select the Video checkbox to create a video file from an appropriate source (i.e. a video file) during the conversion. Must be selected in order for video files to be created.
5.	<b>(Source Media Filter) Audio</b> - select the Audio checkbox to create an audio file from an appropriate source during the conversion. Must be selected in order for audio files to be created.
6.	<b>(Source Media Filter) Images</b> - select the Images checkbox to create Still Image file types from an appropriate source during the conversion. Must be selected in order for still image files to be created.
7.	<b>Target Media Naming - Video</b> - allows the user to attach a series of alphanumeric characters to the beginning (Prepend) or to the end (Append) of

	the video file name, or to leave the file name alone (select None).
8.	<b>Timed Event checkbox</b> - select the Timed Event checkbox to schedule conversion activity for specific time periods according to the constraints of your workflow requirements.
9.	<b>Timer Interval</b> - with the Timed Event checkbox selected, the user may then select either: 1). <b>Set Timer Interval</b> then enter an interval time in minutes, or 2). <b>Use Time Table</b> , which uses the time periods set in the Conversion Scheduler to convert files.
10.	<b>Source Folder</b> - displays and allows the user to choose the "watched" directory in which the source files will arrive for conversion. Press the <b>Source</b> button to open a standard browser, which allows the user to search for an appropriate directory.
11.	<b>Target Folder</b> - displays and allows the user to choose the directory in which the completed files will be saved. Press the <b>Target</b> button to open a standard browser, which allows the user to search for an appropriate directory in which to store the target files.
12.	<b>Completed Files Folder</b> - displays and allows the user to choose the directory in which the source files will be saved upon completion of the conversion. Note that the <b>Delete Source</b> button must be unselected if you need to save the source files after the conversion has taken place.
13.	<b>Target Naming - Audio</b> - allows the user to attach a series of alphanumeric characters to the beginning (Prepend) or to the end (Append) of the audio file name(s), or to leave the file name alone (select None).
14.	<b>Save Folder Settings</b> - save the current settings of this folder as a file, which can be loaded as needed to perform similar conversions.
15.	<b>Load Folder Settings</b> - opens a standard browser, which allows the user to browse for and load a saved settings file for use.
16.	<b>Conversion Scheduler</b> - with the pulldown menu set to <b>Use Time Table</b> , the user may select and deselect time slots from the weekly schedule during which conversions will be processed.
17.	<b>OK button</b> - confirm the current settings or any changes made and close the Folder Settings dialog box.